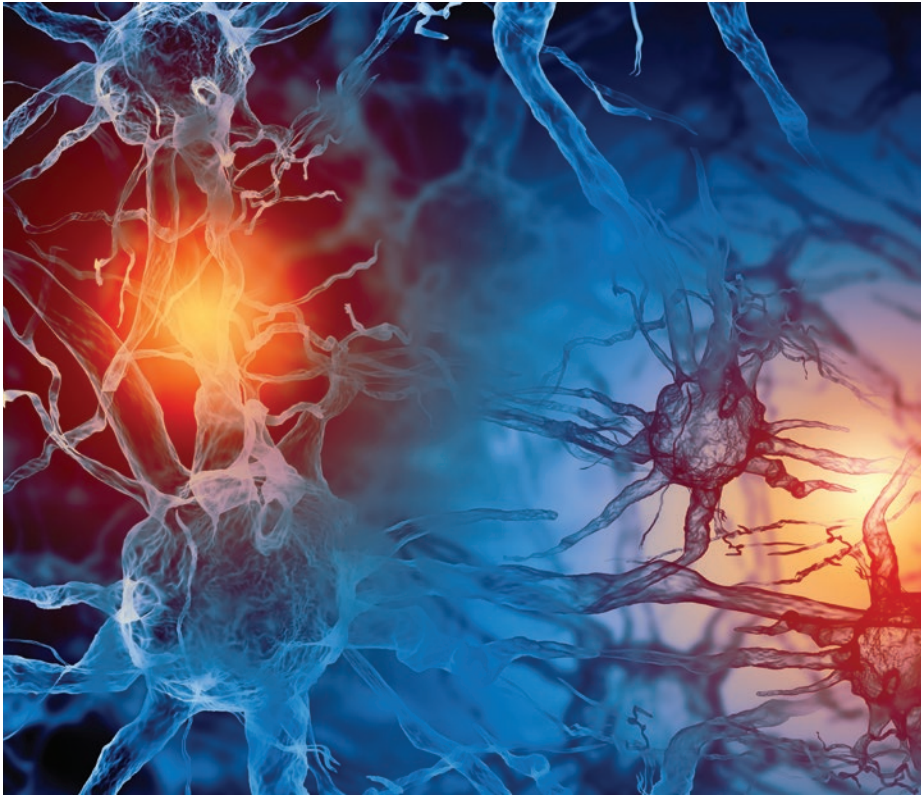


Allegheny Health Network's Neuroscience Institute Presents

Pennsylvania Neurological Society Annual Meeting

Saturday and Sunday, September 16 and 17, 2017
Allegheny General Hospital, Pittsburgh, Pennsylvania



Jointly Provided By

Allegheny Health Network Neuroscience Institute
and the Pennsylvania Neurological Society



Allegheny
Health Network

Conference Directors

Sandeep Rana, MD

Clinical Associate Professor
Drexel University College of Medicine
Associate Professor Adjunct
Temple University School of Medicine
Allegheny General Hospital
Allegheny Health Network
Pittsburgh, Pennsylvania

James Valeriano, MD

Chairman, Department of Neurology
Allegheny Health Network
Professor of Neurology
Temple University School of Medicine
Director, Comprehensive Epilepsy Program
Allegheny General Hospital
Allegheny Health Network
Pittsburgh, Pennsylvania

Keynote Speaker

Allen C. Bowling, MD, PhD

Physician Associate
Colorado Neurological Institute (CNI)
Clinical Professor of Neurology
University of Colorado
Boulder, Colorado

Faculty

Julian E. Bailes, Jr., MD

Bennett-Tarkington Chair
Department of Neurosurgery, NorthShore
University HealthSystem
Co-Director, NorthShore Neurological Institute
Clinical Professor of Neurosurgery
University of Chicago Pritzker School
of Medicine
Chicago, Illinois

David W. Barker, MD

Division Chief Nuclear Medicine
Department of Radiology
Allegheny Health Network
Pittsburgh, Pennsylvania

Lolly Bentch

Patient Liaison
Department of Health
Office of Medical Marijuana
Harrisburg, Pennsylvania

Patricia K. Coyle, MD, FAAN, FANA*

Professor and Vice Chair (Clinical Affairs)
Director, MS Comprehensive Care Center,
Stony Brook University Medical Center,
Stony Brook, New York

Laurie Gutmann, MD

Director, American Board of Psychiatry
and Neurology
Professor, Vice Chair Clinical Research
Department of Neurology
University of Iowa Hospitals and Clinics
Iowa City, Iowa

Brad Klein, MD, MBA

Member, AAN Practice Management and
Technology Committee
Chief Operating Officer
Abington Neurological Associated, Ltd.
Abington, Pennsylvania

Timothy Lechlitter, MD

Clinical Assistant Professor of Neurology
Lewis Katz School of Medicine at Temple
University
Department of Neurology – Movement
Disorders
Director, Cahouet Center for
Comprehensive Parkinson's Disease Care
Allegheny General Hospital
Allegheny Health Network
Pittsburgh, Pennsylvania

Frank S. Lieberman, MD

Director, Adult Neurooncology Program
UPMC Hillman Cancer Center
Professor of Neurology, Neurosurgery and
Medical Oncology
University of Pittsburgh School of Medicine
Pittsburgh, Pennsylvania

Dolores D. Santamaria, M.D., D. ABPN, D. UCNS

Director of Headache Center
West Penn Hospital
Allegheny Health Network
Pittsburgh, Pennsylvania

Thomas F. Scott, MD

Professor of Neurology
Drexel University College of Medicine
Director, Allegheny MS Treatment Center
Vice chairman Department of Neurology
Allegheny General Hospital
Pittsburgh, Pennsylvania

Christopher T. Skidmore, MD

Vice Chair, Clinical Affairs
Director, Neurology Residency Program
Department of Neurology
Thomas Jefferson University
Philadelphia, Pennsylvania

Andrea Synowiec, DO

Department of Neurology
Allegheny General Hospital
Pittsburgh, PA

Ashis H. Tayal, MD, FAHA

Associate Professor of Neurology and
Medicine
Temple University School of Medicine
Medical Director Comprehensive Stroke
Center
Co-director Cerebrovascular Center
Allegheny General Hospital
Allegheny Health Network
Pittsburgh, Pennsylvania

David Von Hofen, MS

Director of Programs and Outreach
Parkinson Foundation Western Pennsylvania

Donald M. Whiting, M.D., M.S., FAANS

Professor of Neurosurgery
Drexel University College of Medicine
System Chair, Neuroscience Institute
Allegheny Health Network
System Chair, Department of Neurosurgery
Co-Director, Division of Functional
Neurosurgery
Co-Director, Neurosurgery Spine
Bio-Mechanics Lab
Allegheny Health Network
Pittsburgh, Pennsylvania

Eric Weisman, MD

Director Behavioral Neurology
Director Allegheny Memory Disorders Clinic

Richard W. Williamson, MD

Director Endovascular Services
Allegheny General Hospital
Pittsburgh, Pennsylvania

Faculty Disclosure

As a provider accredited by ACCME, Allegheny General Hospital must ensure balance, independence, objectivity and scientific rigor in its educational activities. Course director(s), planning committee, faculty, and all others who are in a position to control the content of this educational activity are required to disclose all relevant financial relationships with any commercial interest related to the subject matter of the educational activity. Safeguards against commercial bias have been put in place. Faculty also will disclose any off-label and/or investigational use of pharmaceuticals or instruments discussed in their presentation. Disclosure of this information will be published in course materials so those participants in the activity may formulate their own judgments regarding the presentation.

Symposium Overview/Intended Audience This annual conference is developed to raise awareness of and disseminate knowledge about developments in the care of people with neurological conditions. Physicians, health care providers and medical students involved in the management of neurological diseases can benefit from attending this program.

Objectives

At the conclusion of the program, participants should be able to:

- Explain the recent advancements in the field of Vascular Neurology, Epilepsy, Movement disorders, Multiple sclerosis, Headaches, Dementia, Concussion, Paraneoplastic syndromes and breakthroughs in Imaging Technology.
- Comprehend and navigate the new government sponsored programs namely MACRA and MIPS
- Identify the patients that would benefit from Medical marijuana, and understand the role of physicians in providing this option to their patients.
- Understand the current requirements of ABPN for Maintenance of certification ie MOC.

Intended Outcome

We want to positively impact patient care in Pennsylvania by providing up-to-date information to all healthcare professionals caring for patients with neurological conditions.

Conference Schedule

Agenda, Saturday, September 16, 2017

7 a.m. *Registration/Continental Breakfast/Visit Exhibitors*

7:40 a.m. **Introductory Remarks**

Anthony May, MD
Sandeep Rana, MD

7:45 a.m. **MACRA: Overview, Implications, and Opportunities**

Brad Klein, MD

8:30 a.m. **Acute Stroke Therapy Update and Systems Based Care for Acute Stroke**

Ashis H. Tayal, MD, FAHA

9 a.m. **Endovascular Therapy for Acute Ischemic Stroke**

Richard Williamson, MD

9:30 a.m. Questions

9:45 a.m. *Break/Visit Exhibitors/Posters*

10 a.m. **Migraine pathophysiology and the Role of CGRP as a Targeted Treatment for Migraine**

Dolores Dominguez Santamaria, MD

10:30 a.m. **AED Update**

Christopher Skidmore, MD

11:15 a.m. **Treatment Options for Medically Refractory Epilepsy**

Andrea Synowiec, DO

12 p.m. Questions

12:15 p.m. *Lunch/PNS Business Meeting/Exhibitors/Posters*

1:45 p.m. American Academy of Neurology: Update on Advocacy*

2 p.m. **Keynote: A Neurologist's Guide to Medical Marijuana — An Objective Review of Pharmacology, Efficacy, and Safety**

Allen C. Bowling, MD, PhD

2:45 p.m. **Pennsylvania Medical Marijuana Program**

Lolly Bentch

3:30 p.m. **Update on Dementia 2017**

Eric Weisman, MD

4 p.m. Questions

4:15 p.m. *Announcement of Poster Winners/Adjournment*

6:00 p.m. **Conference Dinner — Rivers Casino**

Conference Schedule

Agenda, Sunday, September 17, 2017

7:30 a.m. *Registration/Continental Breakfast/Visit Exhibitors*

8 a.m. **Summary of the ABPN MOC Program:
Life-Long Learning for Psychiatrists and Neurologists**
Laurie Gutmann, MD

8:30 a.m. **Scientific and Practical Considerations for Individualized Treatment
Selection for Patients with MS: An Innovative Patient Centered Learning
Experience***
Patricia K. Coyle, MD, FAAN, FANA

9:30 a.m. **Immunotherapy of MS**
Thomas Scott, MD

10:05 a.m. **Neurologic Paraneoplastic Disorders: An update**
Frank S. Lieberman, MD

10:50 a.m. **Mild Traumatic Brain Injury in Sports: Are They Really Mild?**
Julian Bailes, MD

11:35 a.m. Questions

11:45 a.m. *Lunch/Visit Exhibitors*

12:15 p.m. **The Cahouet Center for Parkinson's Disease: a new way to treat
a whole Parkinson journey**
Timothy Leichter, MD
David Von Hofen, MS
Donald M. Whiting, MD, MS, FAANS

1:15 p.m. **Molecular Imaging of the Brain: New radiotracers**
David Barker, MD

1:45 p.m. Questions

2 p.m. *Adjournment*

Accreditation

This conference will provide a total of 11.25 hours of education
Saturday = 6.75 and Sunday = 4.5 hours

Physicians

This activity has been planned and implemented in accordance with the accreditation requirements and policies of the Accreditation Council for Continuing Medical Education (ACCME) through the joint providership of Allegheny General Hospital and the Pennsylvania Neurological Society. Allegheny General Hospital is accredited by the ACCME to provide continuing medical education for physicians.

Allegheny General Hospital designates this live activity for 11.25 *AMA PRA Category 1 Credits™*. Physicians should claim only the credit commensurate with the extent of their participation in the educational activity.

Participants claiming CME credit from this activity may submit the credit hours to the American Osteopathic Association for Category 2 credit.

Nurse Practitioners

American Academy of Nurse Practitioners (AANP) accepts *AMA PRA Category 1 Credits™* from organizations accredited by the ACCME.

Physician Assistants

American Academy of Physician Assistants (AAPA) accepts certificates of participation for educational activities certified for *AMA PRA Category 1 Credits™* from organizations accredited by the ACCME.

Physician assistants may receive a maximum of 11.25 hours of Category 1 credit for completing this program.

Nurses: ANCC accepts *AMA PRA Category 1 Credits™* from organizations accredited by the ACCME

Non-physician attendees

Allegheny General Hospital has approved this activity for a maximum of 11.25 contact hours for non-physicians.

Accreditation – The Cleveland Clinic Foundation

Please note, Saturday's program from 9:00 – 10:05 am is accredited by The Cleveland Clinic Foundation

The Cleveland Clinic Foundation Center for Continuing Education is accredited by the Accreditation Council for Continuing Medical Education to provide continuing medical education for physicians.

The Cleveland Clinic Foundation Center for Continuing Education designates this live activity for a maximum of 1.50 *AMA PRA Category 1 Credits*[™]. Physicians should claim only the credit commensurate with the extent of their participation in the activity.

Participants claiming CME credit from this activity may submit the credit hours to the American Osteopathic Association for Category 2 credit.

Pharmacists

Please note, Saturday's program from 9:00 – 10:05 a.m. is accredited by The France Foundation

The France Foundation is accredited by the Accreditation Council for Pharmacy Education as a provider of continuing pharmacy education and will award 0.015 CEUs to pharmacists who complete the activity, complete the registration and evaluation forms, and successfully pass a posttest (>70%). There is no fee to participate in this activity. This is a knowledge educational activity. Your CE credits will be submitted electronically to the CPE Monitor. CE providers must upload participant information within 60 days from the date the participant completed the activity.

Please submit all evaluations and credit requests no later than 30 days after you complete this activity to ensure your credit fulfillment, as CE credit cannot be awarded past 60 days from the activity date. ACPE No. 0391-9999-17-003-H01-P.

Accommodations & Reservations

Room Block

A block of rooms has been reserved at:

Hyatt Place Pittsburgh – North Shore
260 North Shore Drive, Pittsburgh, PA 15212

Room Rates

Friday, September 15 – \$189.00 (single or double occupancy)

Saturday, September 16 – \$189.00 (single or double occupancy)

Hotel Parking = \$22

Reservations

Call: 800-993-2213 | Use Group Code: G-GPNS

Online: https://pittsburghnorthshore.place.hyatt.com/en/hotel/home.html?corp_id=G-GPNS

Deadline: Tuesday, August 22, 2017

** Rooms reserved after this date are at regular rates and will be based on availability. We recommend that you make reservations as soon as possible.*

Check In: 3:00pm

Check out: Noon

Refund Policy

A refund of the registration fee, less a \$10.00 processing fee, will be made when a written request or a telephone request followed by a written confirmation is received prior to September 9, 2017. After this date, refunds will not be made. Fees will not be refunded for failure to attend.

The sponsors of this course reserve the right to cancel or postpone any conference because of unforeseen circumstances or insufficient enrollment. In the event of such cancellation, full tuition will be refunded.

Registration Information

Physicians \$150

Other healthcare provider \$75

There is no fee for residents, fellows or students. To receive this special rate, please call 412-359-4952 or email rachel.phillips@ahn.org

Fees include continuing education credits, conference materials and conference food and beverage.

To Register:

ONLINE REGISTRATION can be accessed at www.aghcme.org

Click on **Conference Schedule** on the left then scroll until you find **Pennsylvania Neurological Society Annual Meeting**

To register by mail, please complete the registration form and return it with the registration fee to:
Continuing Medical Education
Allegheny General Hospital
320 East North Avenue
Pittsburgh, Pennsylvania 15212-4772

The preferred method of payment is by VISA, MasterCard, American Express or Discover, however, checks will be accepted made payable to **Allegheny General Hospital**

Questions may be directed to the CME Office by phone at 412-359-4952 or by sending e-mail to rachel.phillips@ahn.org.

Registration Form (required)

Pennsylvania Neurological Society Annual Meeting

Saturday and Sunday, September 16 and 17, 2017

Please indicate:

____ # Attending Saturday Dinner at Rivers Casino (including yourself)

Name/Degree

(print name and degree, if applicable, as you wish it to appear on badge)

Affiliation

Home or Business Address (including department):

(where you prefer mail to be sent)

City

State

Zip

Day Telephone ()

FAX# ()

E-mail

Method of Payment: Credit Card Check

Credit Card Type: Visa MasterCard American Express Discover

Total Amount

Credit Card #

Exp. Date

Name on Card

Signature*

** By signing this form, I authorize Allegheny General Hospital to charge my credit card for the above amount. My signature also indicates that I will not dispute this charge in the future through my credit card company.*

If you require assistance with hearing, vision or mobility to make this conference accessible to you, please check this box and contact the CME office at **412-359-4952** at least two weeks prior to the conference date.

Continuing Medical Education
Allegheny General Hospital
320 East North Avenue
Pittsburgh, Pennsylvania 15212-4772

Non-Profit
Organization
U.S. Postage
PAID
Pittsburgh, PA
Permit No. 2885

www.aghcmc.org